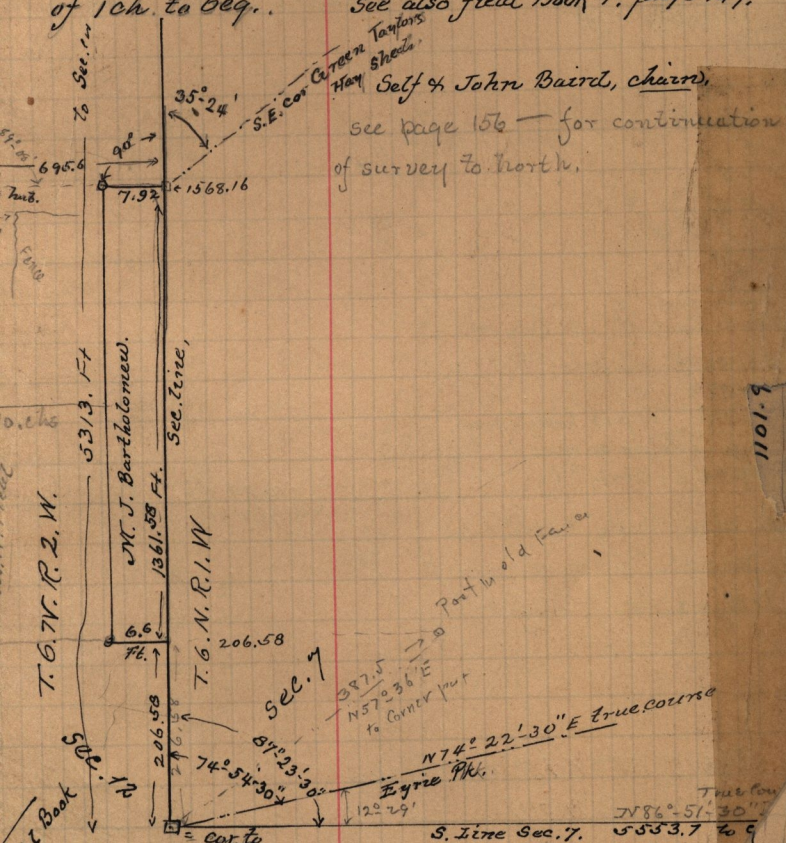


Survey made for Merlin Bartholomew July 20-1893.

58. James Field to Davis Bartholomew,
#1. May 17-1879. Pt S.E. 1/4 Sec. 12. T. 6. N. R. 2. W.
Beg. 3.13 chs. N. of S. E. Cor. ^{sd. 1/4 Sec.} thence
N 20.63 chs. W ^{3/25 of 1 ch.} ^{on 12 of 1 ch.} S 20.63 chs. E 1/10
of 1 ch. to beg. See also field Book F. page 149.



Self & John Baird, chain.
see page 156 - for continuation
of survey to north.

T.G.N.R. 2.W.
5313.57 Ft.
M. J. Bartholomew.
1361.58 Ft.
T.G.N.R. 1.W.
206.58
76.1
206.58
Sec. 12
Sec. 7
Sec. 13
Field Book
F. 153

Secs. 7-12-13
T.G.N.R. 14.2. West.

Being a cedar stake 18" long driven 12" line
and stone 6" x 6" x 12" long on top of said S.E. cor.
and mound & pits, this being the N.E. 1/4 24
position of an old corner, marked
and stake in same.

1101.9